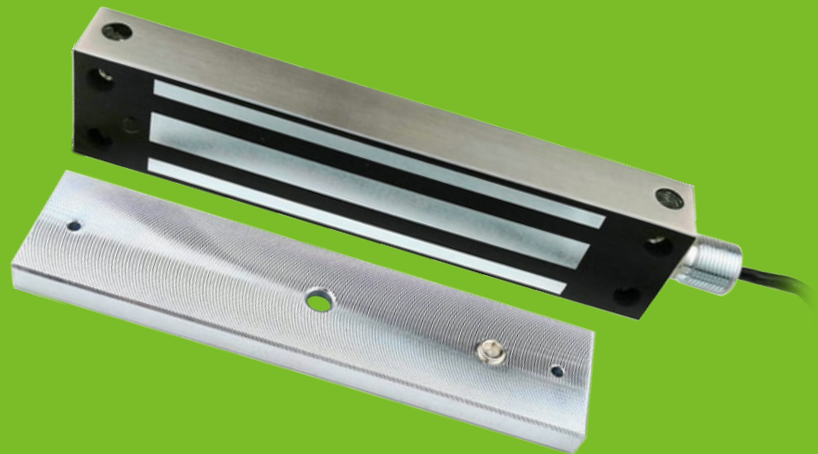




IP66

280KG Waterproof Electromagnetic lock

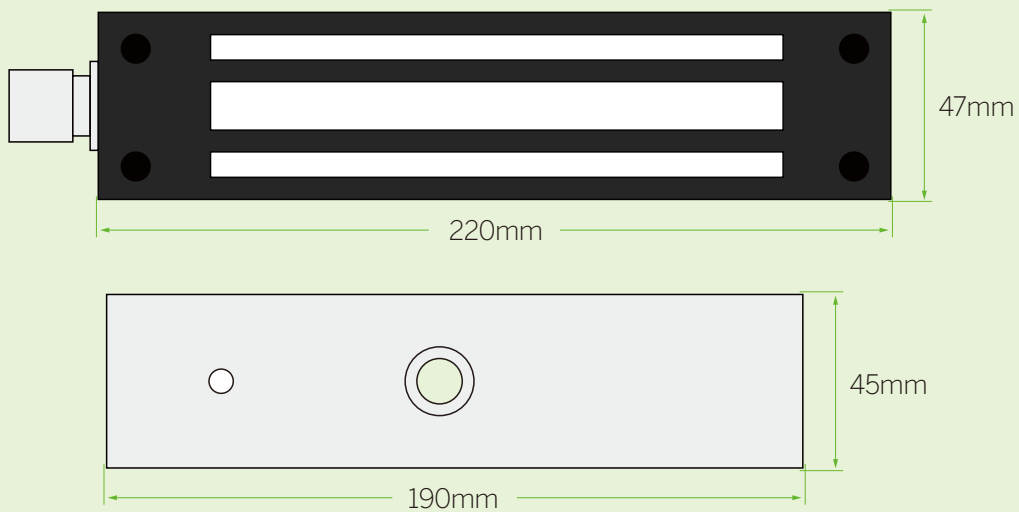


EL-W600S, EL-W600SD

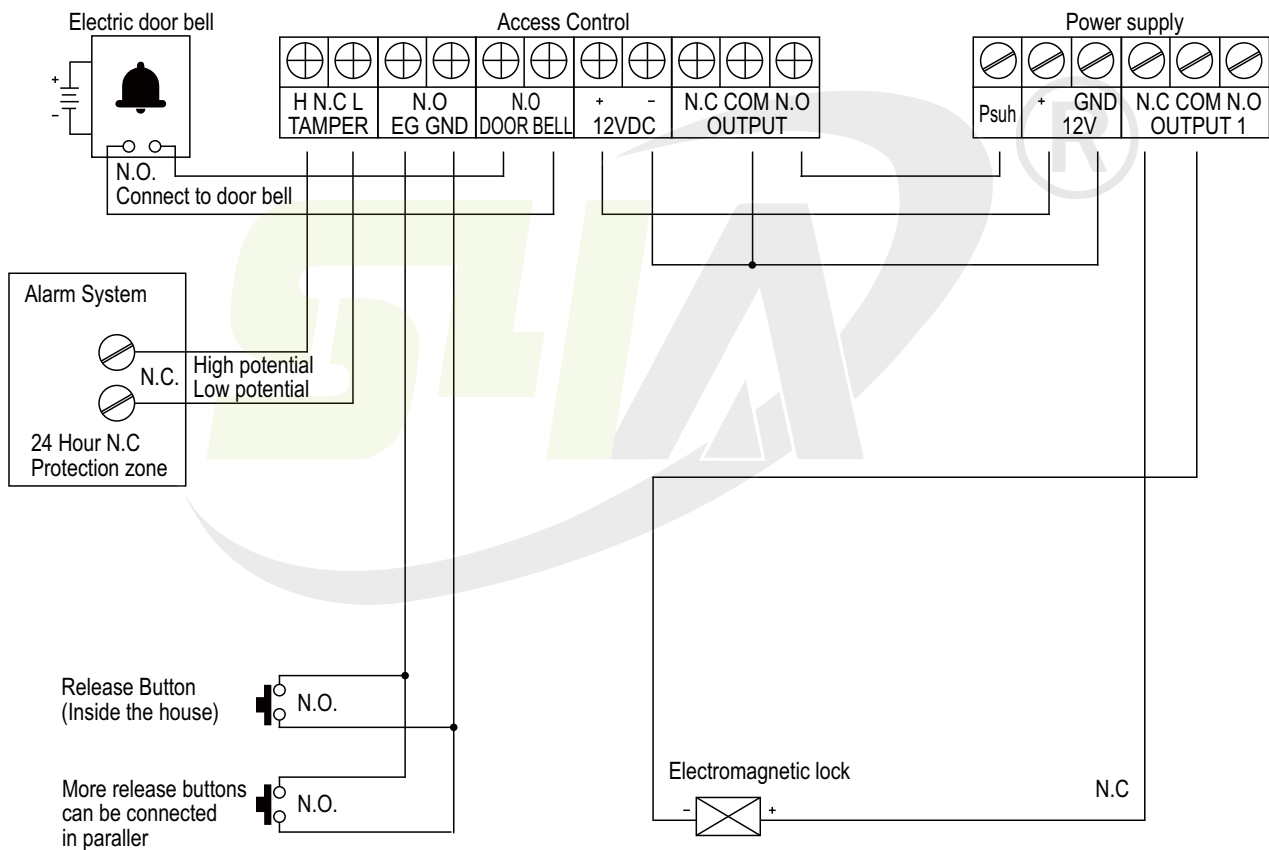
Specifications

EL-W600S 4 Wires	12V & 24V adjustable
EL-W600SD 7 Wires	12V & 24V adjustable and door sensor function, NO/NC/COM
Lock Size	220Lx47Wx28H(mm)
Armature Plate	190Lx45Wx13H(mm)
Holding Force	280kg (600Lbs)
Voltage	DC12V or DC24V (adjustable)
Current Draw	12V/500mA 24V/250mA
Optional Bracket	LZ-W600
Suitable for	Wooden door, Glass door, Metal door, Fireproof door
Signal Output	Need to order EL-W600S
Surface Temp	≤20°C
Operating Temp	-10°C ~ 55°C (14°F-131°F)
Suitable Humidity	0~90%(non-condensing)
Finishes for Shell	Anodized aluminum
Finishes for Magnetic	Zinc
Finishes for Armature	Zinc
Weight	2.5kg

Dimensions



Wiring diagram



S4A Industrial Co., Limited

Address: The 2nd floor, Jinmin'an Industrial Zone, #529, Bulong Rd.
Bantian St. Longgang Dist. Shenzhen, PRC.. CN 518131



Tel: +86 755 29450011

www.s4a-access.com / Email: sales@s4a-access.com
Mob/Whatsapp/Wechat/Viber: +86 134 1050 0721